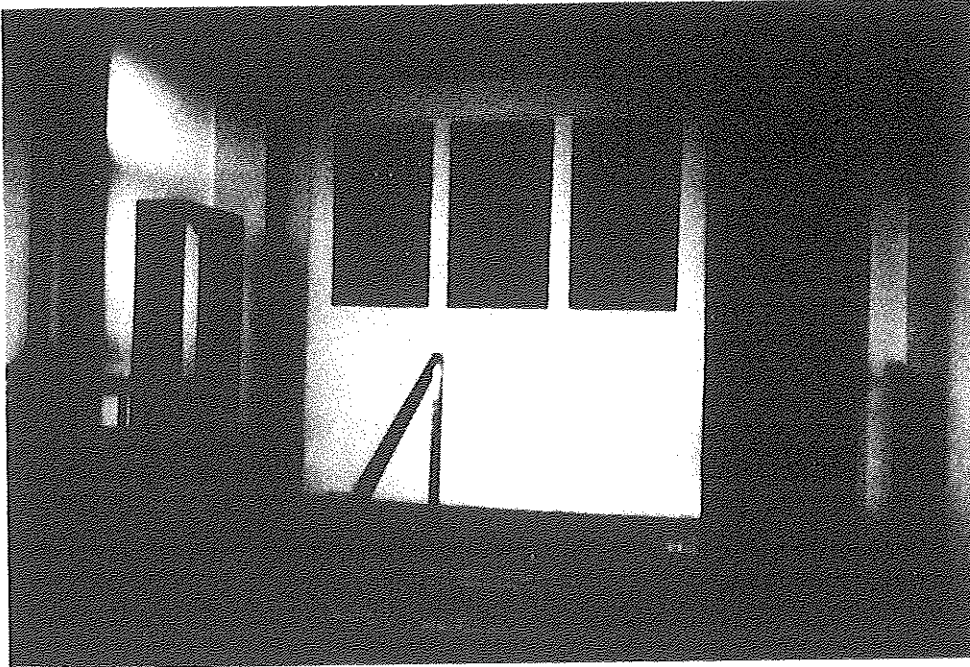


# TGE

**BULLET RESISTANT  
TRANSPORTABLE GUARD ENCLOSERS**

---



#### **APPLICATIONS -**

Fully enclosed bullet resistant shelters provide secure working environments for vital operational areas such as entry control checkpoints, central alarm stations, sensitive material storage, surveillance posts, field payroll offices.

---

#### **CODE COMPLIANCE**

Assembly is only manufactured from materials (steel and glass) which are UL listed and labeled by Underwriters' Laboratories, Inc. (UL), under Standard for Safety UL 752, Bullet Resisting Equipment for:

\*Level 1, \*Level 2, \*Level 3, \*Level 4,  
\*Level 5, \*Level 6, \*Level 8

**NO UL LABEL IS AVAILABLE WITH THIS UNIT**

#### **DESCRIPTION**

TGE are prefabricated and assembled enclosures with surround vision and door access. Typical units include interior and exterior finishes, and other options as required. At the site TGEs are offloaded and anchored to prepared pads or tower structures. The necessary services are then connected making the TGEs ready for staffing in a fraction of the time required to construct enclosures using conventional building materials.

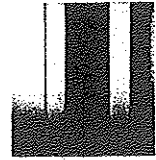
---

#### **FINISH**

-Prior to shipment, panels are degreased, all welds are ground smooth, and assemblies are spray-painted with rust-inhibiting primer.

**CHICAGO BULLET PROOF SYSTEMS**  
2595 BOND ST.  
UNIVERSITY PARK, IL 60484

**WWW.CHICAGOBULLETPROOF.COM**  
P. (708) 534-9102  
F. (708) 534-9132



## FEATURES

### DOOR

- All welded construction, 1-3/4" thick.
- 1/8" thick internal reinforcing channels.
- Formed from SHOT-TEX brand bullet resistant steel.

### HARDWARE

Chicago Bullet Proof's standard package includes the following hardware and related items:

- Sargent 8104 mortise lockset x LNJ (lever) trim x US26D (satin chrome) finish.
  - Lockset function is ANSI F07 (storeroom or closet function).
  - Key locking cylinder on the threat side/operative lever on interior.
  - Door/Frame assembly is mortised, reinforced, drilled and tapped at the factory for lockset.
  - Heavy duty closer. Yale 4400 x Aluminum finish
- Mounted at the site by others, all drilling and tapping by a field installer.

- CBP #12252 bullet resistant continuous hinge.
- Prime painted hinge for Level 1 through Level 3.
- Satin finish stainless steel hinge for rating Level 4.
- Hinge preps are drilled and tapped at the factory.
- Silencers.

### STANDARD HARDWARE OPTIONS

Folger Adams 712 electric strike x 24VAC x LBM x US26D (satin chromium) finish.

(Access control and transformer for electric strike are by others)

- UL Listed bullet-resisting ventilatant louvre: LVU series louvre panel, 24" wide x 12" high.
- Batt fiberglass insulation, Threshold and Weatherstrip.

## WINDOW PANELS

### TRANSPARENT ARMOR

- UL Listed bullet resistant transparent armor supplied with frame.
- Shipped in a separate crate.
- Includes acoustic rubber spacers for seating transparent armor into framing for transaction windows.
- Field glazing is required.
- Laminated glass is standard

-Optional transparent armors: Glass clad polycarbonate, Glass clad polycarbonate with air gap, Laminated polycarbonate, Acrylic.

- HVAC with bullet resistant shroud fabricated of UL listed bullet resistant Shot-Tex steel
- Roof, walls and optional floor are fabricated from UL listed bullet resistant Shot-Tex steel
- Insulation fills the cavities of the wall, roof and floors.
- Removable lifting eyes for crane handling or underpinning for forklift handling
- Suspended ceiling grid with recessed lighting fixtures
- Electrical work conforms to the National Electrical Code. Floor or roof fed distribution panel with grounded surface mounted duplex receptacles, circuits as needed to supply interior and exterior power requirements.
- One continuous stainless steel counter

## OPTIONS

- PP PACKAGE PASSER - See standard data sheet.
- GP3 OR GP4 GUNPORT - See standard data sheet.
- LOUVRE - See standard data sheet.
- CUSTOM SHROUDS FOR HVAC AND AND ELECTRICAL OR PLUMBING PENETRATION.

CUSTOM-BUILT UNITS AVAILABLE.

CHICAGO BULLET PROOF SYSTEMS  
2595 BOND ST.  
UNIVERSITY PARK, IL 60484

[WWW.CHICAGOBULLETPROOF.COM](http://WWW.CHICAGOBULLETPROOF.COM)  
P. (708) 534-9102  
F. (708) 534-9132