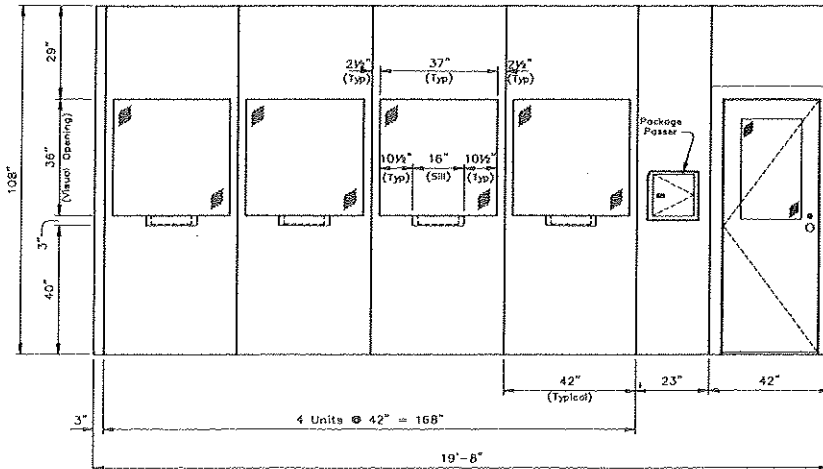


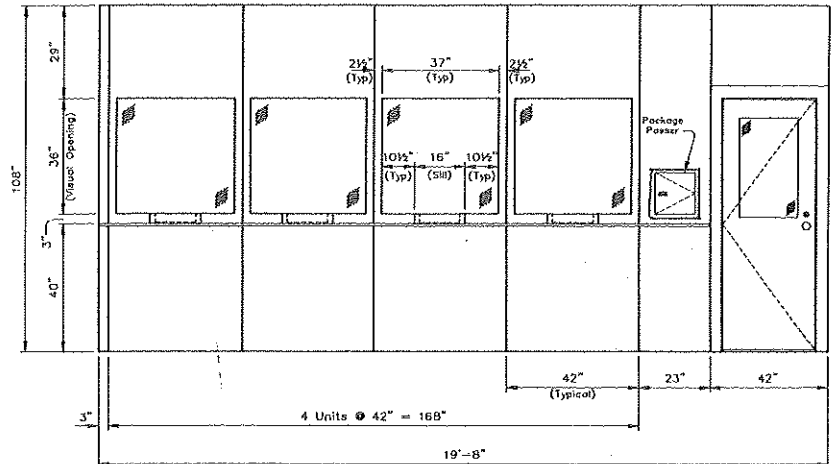
CX

BULLET-RESISTING PANELIZED CHECK CASHING SYSTEM



Customer Store Front
(20' - 0" Nominal Store Front)

Customer Store Front
Optional Counter Shown
(20' - 0" Nominal Store Front)



APPLICATIONS/BENEFITS

Chicago Bullet Proof's CX Check Cashing System is a fully enclosed modular bullet-resisting assembly that provides protection from armed robbery or intrusion. Installations of the modular system are found in check cashing facilities, currency exchanges, credit unions and financial institutions.

The design of the prefabricated panel system allows for several key features:

- Rapid, on-site installation.
- Interchangeable panels to suite any floor layout.
- Flexibility in panel arrangement.
- Clean, flush appearance.
- Safe and secure enclosure.
- High quality materials that resist abuse and allow low-cost maintenance.
- Quick ordering and implementation.
- Applicable for retrofit or new construction.

**Chicago
Bullet Proof**

METALTEK FABRICATING, INC.
d/b/a CHICAGO BULLET PROOF SYSTEMS
2595 BOND ST.
UNIVERSITY PARK, IL 60484

Four panel configurations are available: flush panel, vision panel, teller window panel, and door panel. Options such as counterwork extending the full width of the modular system (on one or both sides), cash drawers, and package passer units are available. Two examples of a typical straight wall layout of a hardened check cashing facility are shown above.

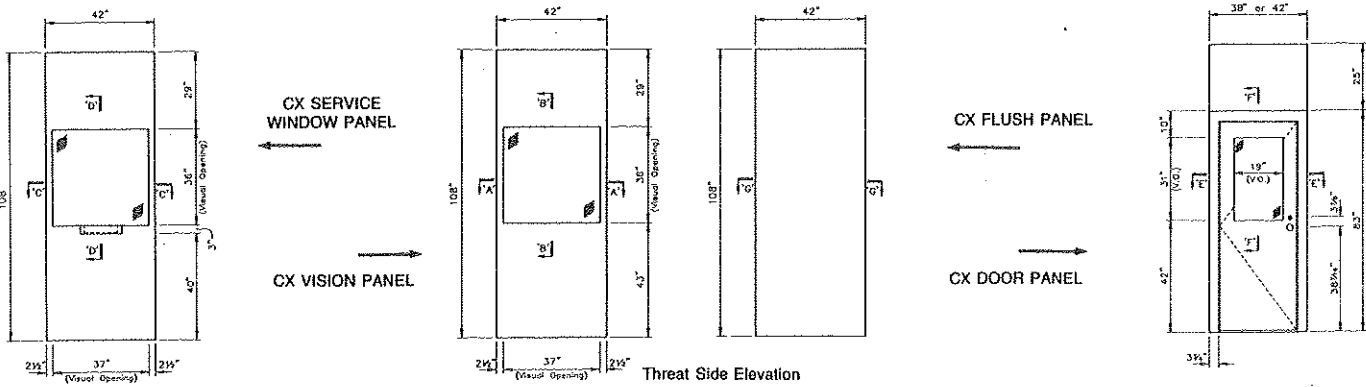
CODE COMPLIANCE

The materials used in the assembly of each CX panel are listed by Underwriters' Laboratories, Inc. as being bullet-resisting in accordance with *Standard for Safety UL 752* for the Super Power Small Arms (SPSA) ballistic level. This covers .44 Magnum Revolver handguns.

PANEL CONSTRUCTION

Each partition is constructed from Chicago Bullet Proof's brand of certified Shot-Tex® #11 bullet-resisting steel in an "all welded" assembly. This type of construction forms a double wall of steel, with a layer facing the threat side and another facing the inside of the enclosure. Each has a depth of 3".

CX BULLET-RESISTING PANELIZED CHECK CASHING SYSTEM



CX SERVICE AND VISION PANELS

■ TRANSPARENT ARMOR

The CX Teller and Vision Window Panels contain UL Listed bullet-resisting transparent armor, 1 $\frac{3}{4}$ " thick. (CBP does not factory glaze the CX panel; this is the responsibility of the installer.) The transparent armor is secured into each panel by a formed glazing stop bolted to the interior access cover with pan head screws at 8" O.C. Chicago Bullet Proof provides acoustic rubber spacers for seating transparent armor into panel.

■ DEAL TRAY

The CX Service Panels are used for transacting smaller items through the UL Listed top-of-counter deal tray, 12 $\frac{3}{4}$ " in width x 1 $\frac{5}{8}$ " in height. The CX Service Window panels feature an acoustically balanced voice transmission system that is enhanced by openings in the deal tray and between the rubber spacers. The deal tray is satin stainless steel #3 throughout.

■ CX FLUSH PANEL

CBP provides the Flush Panel for areas where more privacy is required or where conditions for a solid panel is best suited. It is an opaque panel constructed of Shot-Tex #11 bullet-resisting steels.

■ DOOR PANEL

The CX system comes equipped with an entrance door panel constructed from Shot-Tex #11 bullet-resisting steels. The door frame has a single rabbit profile 2 $\frac{1}{8}$ " x 3" and includes the following hardware components and related items:

- Sargent 7704 mortise lockset x OB trim x US26D (dull chrome) finish.
- Heavy duty closer in sprayed aluminum finish.
- CBP #12252 bullet-resisting continuous hinge.
- Glynn-Johnson #64 silencers.
- 19" x 31" vision panel of UL Listed bullet-resisting glass, SPSA ballistic level, 1 $\frac{3}{4}$ " thick, factory glazed.

■ PACKAGE PASSER

To accommodate commercial customers, the CX Package Passer (PP) is available for transferring currency bags and other items too large for passage through the deal tray. The PP units have vertically hinged, mechanically interlocking doors which are controlled by the teller. This means that only one door can be opened at a time, assuring a layer of armor is between the employee and the public at all times.

- UL certified to meet the SPSA threat level.
- Clear inside capacity of 14 $\frac{5}{8}$ " wide x 11 $\frac{5}{8}$ " high x 12 $\frac{5}{8}$ " deep.
- Constructed from Shot-Tex #11 bullet resisting steel.
- Standard flat black painted finish, optional stainless steel front door.
- Heavy duty continuous hinge on both doors.
- Exterior door utilizes a formed satin stainless steel pull, LHRB swing.
- Interior door uses a three position control handle, brushed finish, LH swing.

SYSTEM ASSEMBLY

The panels are connected by bolts at intervals of 16" O.C. A formed guard angle consisting of Shot-Tex #1 steel at each bolt connection is attached to maintain the ballistic resistance. A 3" wide removable steel access plate is applied by hook and loop ("Velcro") type fasteners on the interior of the adjoining panels to conceal the bolt connections. CBP will also provide corner posts for two or more sided conditions that bolt to adjacent panels.

Once assembled, the system is attached to the existing floor surface with the included floor anchors. The modular panels are attached to the ceiling structure for one or two sided applications (i.e. between two existing walls) through the use of a top support angle. For three-sided free-standing applications, CBP will supply a hardened ceiling mounted to a ceiling support angle attached to the interior panel structure.

FINISH

After Fabrication and prior to fitting door panel for lockset, each panel is degreased using a phosphate wash. All imperfections are filled, the welds are ground smooth and each CX component is spray painted with a rust-inhibiting semi-gloss light grey primer.

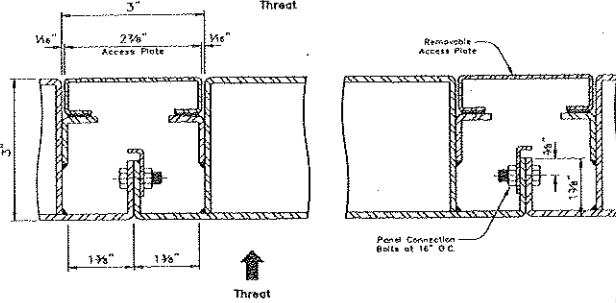
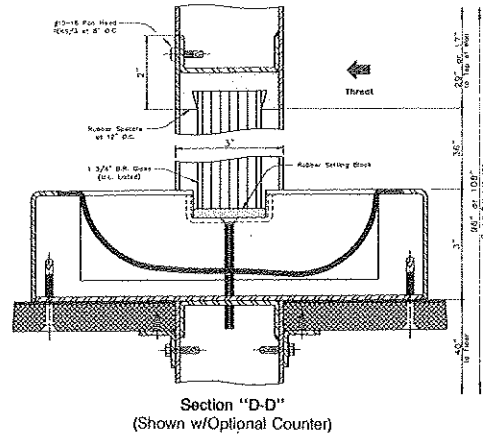
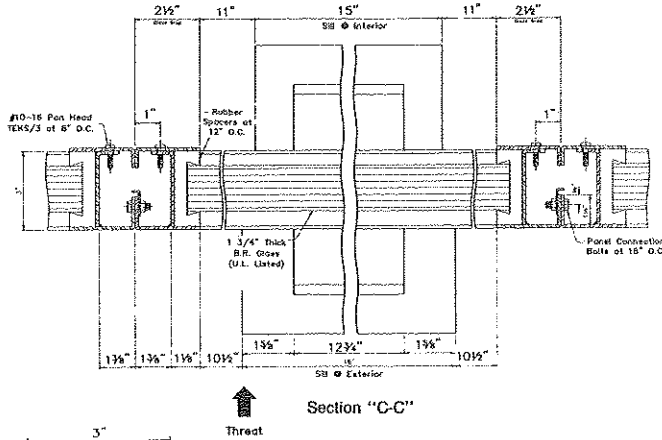
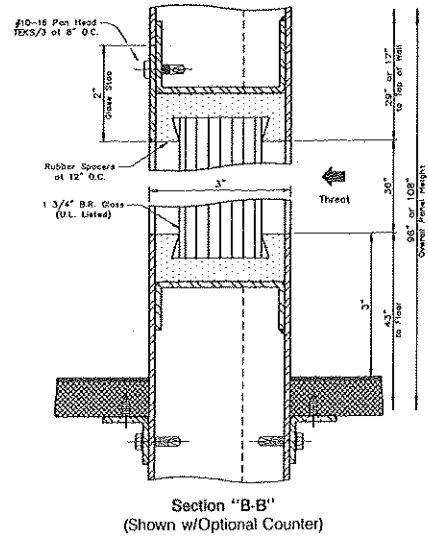
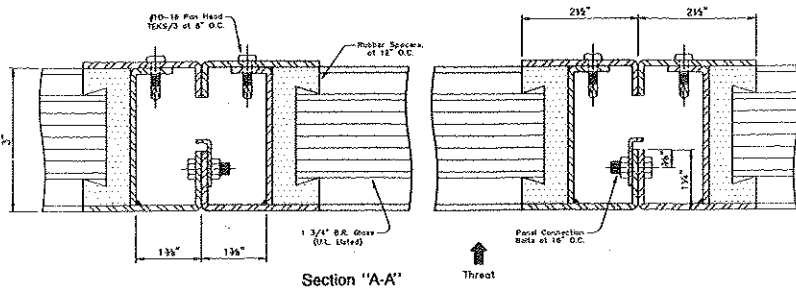
STANDARD SIZES

Panels are available in standard sizes of 42" wide x 96" or 108" high.

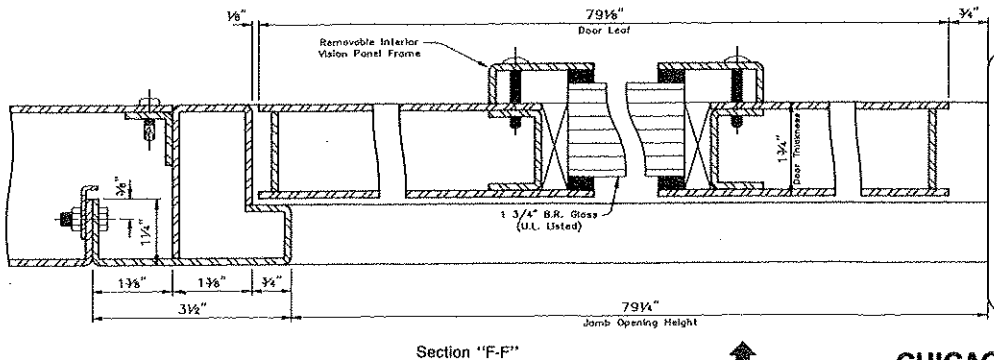
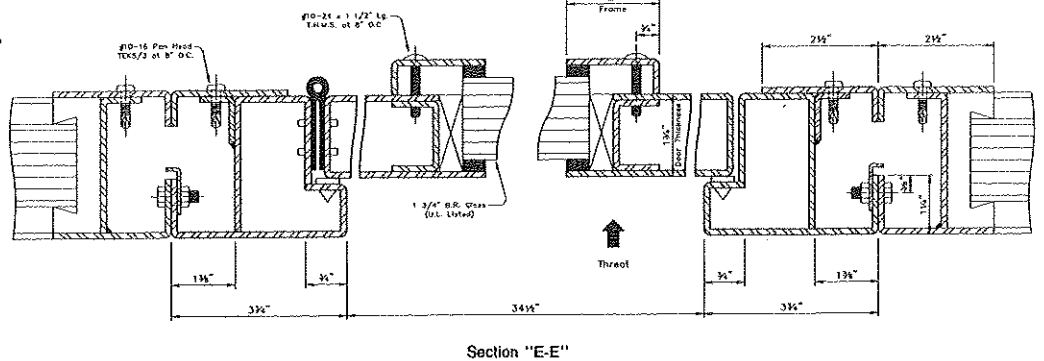
PANEL MODE	O.A. SIZE	PANEL WEIGHT (LBS.)
Vision Panel	42" x 96"	610
	42" x 108"	650
Service Panel	42" x 96"	640
	42" x 108"	680
Flush Panel	42" x 96"	460
	42" x 108"	500
Door Panel	38" x 96"	425
	42" x 96"	460
	38" x 108"	465
	42" x 108"	500
Corner Post	3" x 96"	60
	3" x 108"	65
Ceiling Support Angle	Varies	4 #/LF
Ceiling Panels	Varies	8 #/SF

**Chicago
Bullet Proof
Systems**

CX BULLET-RESISTING PANELIZED CHECK CASHING SYSTEM



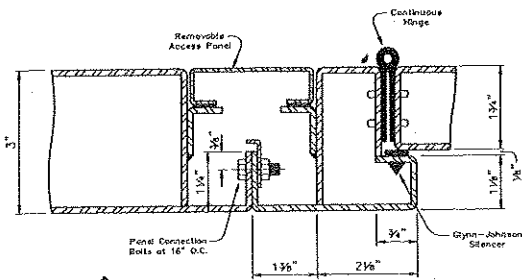
Section "G-G"



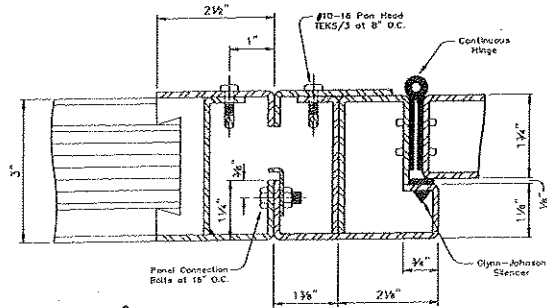
**Chicago
Bullet Proof
Systems**

METALTEK FABRICATING, INC.
d/b/a CHICAGO BULLET PROOF SYS
2595 BOND ST.
UNIVERSITY PARK, IL 60484

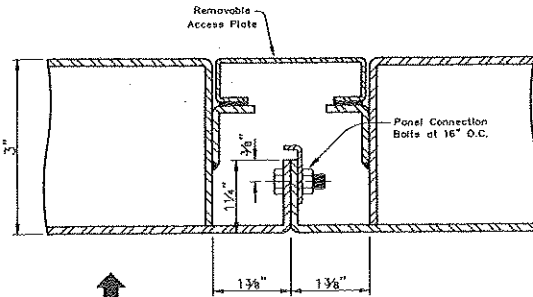
CHICAGO



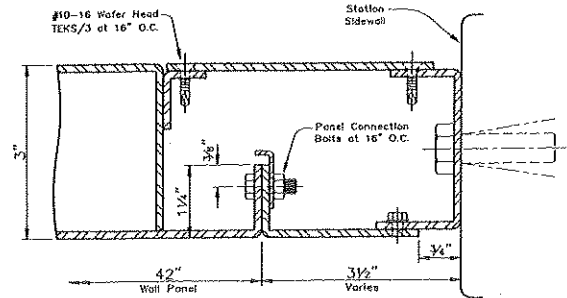
↑ Threat
Panel to Door
(Above & Below Glass Area)



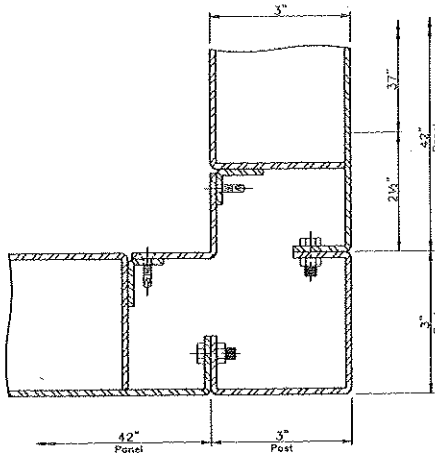
↑ Threat
Panel to Door
(@ Glass Area)



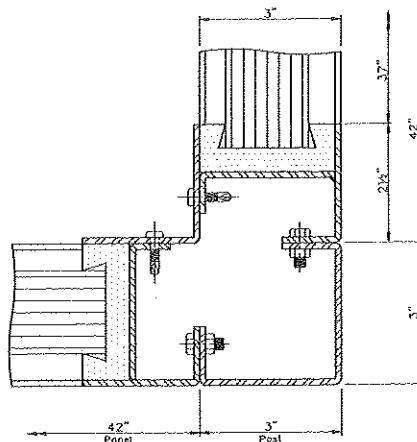
↑ Threat
Panel to Panel



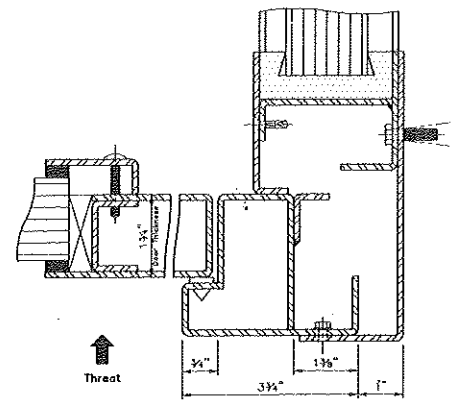
↑ Threat
Panel to Wall



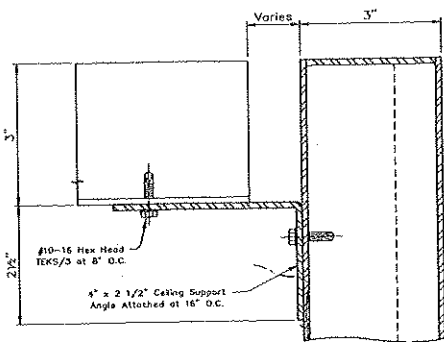
↑ Threat
Corner Post Detail
(Above & Below Glass
or @ Flush Panels)



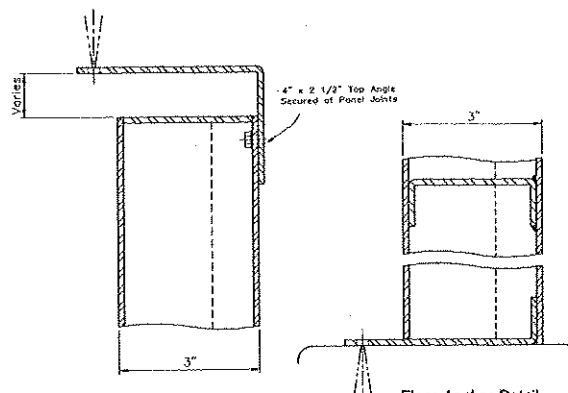
↑ Threat
Corner Post Detail
(@ Teller Windows)



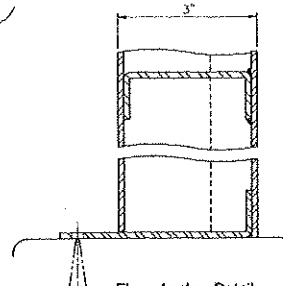
↑ Threat
Door Frame at Sidewall



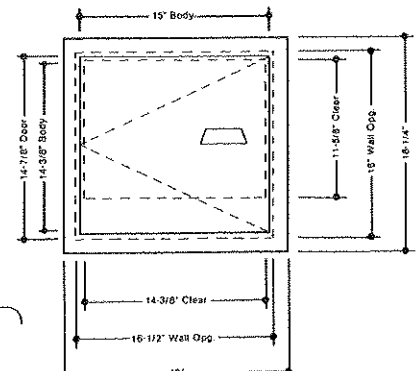
Top of Wall w/o Ceiling



Top of Wall w/Ceiling



Floor Anchor Detail



Package Passer
Threat Side Elevation

**Chicago
Bullet Proof
Systems**

METALTEK FABRICATING, INC.
d/b/a CHICAGO BULLET PROOF SYSTEMS
2595 BOND ST.
UNIVERSITY PARK, IL 60484

